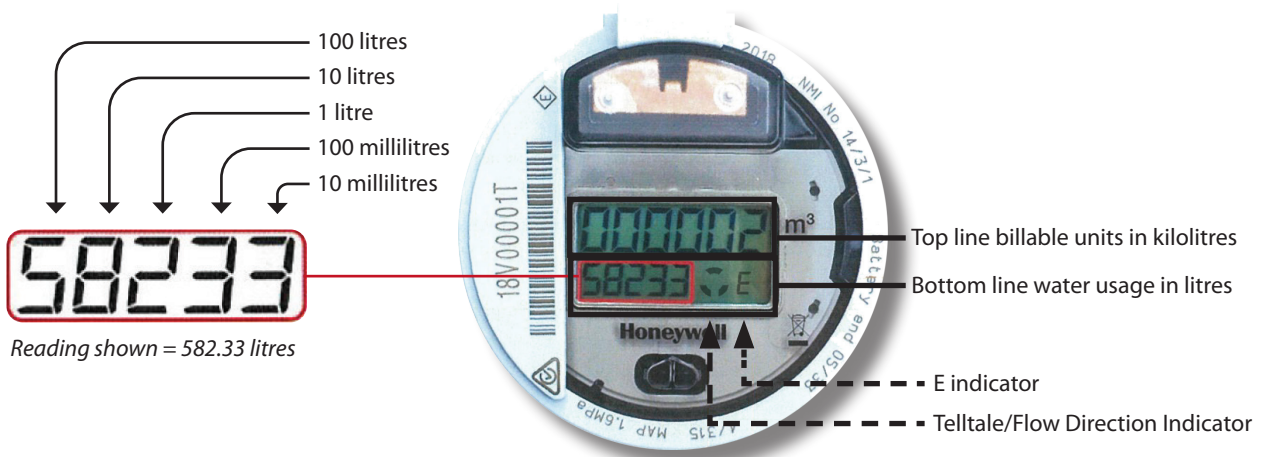


# HOW TO READ YOUR SMART WATER METER

## V200HT Digital Water Meter

Your Smart Water Meter is designed to transmit the meter reading automatically to Council, however it can be read manually from the digital display. The first 3 digits on the bottom line are the numbers to look at when reading the meter to check for leaks.



The display repeats on a 60 second cycle as follows:

Register Display	Function	Duration
	<b>Volume Display</b> <ul style="list-style-type: none"> <li>• Top line (large digits) displays billable units in cubic meters or kilolitres. <b>Reading shown = 2 m<sup>3</sup> or 2 kl</b></li> <li>• Bottom line (small digits) displays non-billable units in litres. <b>Note: Last 2 digits are 0.01 litre. Reading shown = 582.33 litres</b></li> <li>• Telltale/Flow Direction Indicator (Clockwise = Forward Flow). Will disappear when there is no flow.</li> </ul>	52 seconds
	<b>Flow Rate Display</b> <ul style="list-style-type: none"> <li>• Bottom line (small digits) displays current flow rate in litres/hour followed by "F" for flow rate. <b>Reading shown = 123 litres/hour</b></li> </ul>	2 seconds
	<b>Diagnostic Display</b> <ul style="list-style-type: none"> <li>• Bottom line (small digits) displays a diagnostic code (usually "-----", but may differ from shown).</li> <li>• For utility/factory use only.</li> </ul>	2 seconds
	<b>Display ON Test</b> <ul style="list-style-type: none"> <li>• All LCD segments are illuminated to confirm the display is fully functional.</li> <li>• Note the "E" flag will be displayed during this test. This is not an error.</li> <li>• If the "E" flag displays continuously, the meter battery is near the end of its life.</li> </ul>	2 seconds
	<b>Display OFF Test</b> <ul style="list-style-type: none"> <li>• All LCD segments are blank to confirm the display integrity</li> </ul>	2 seconds